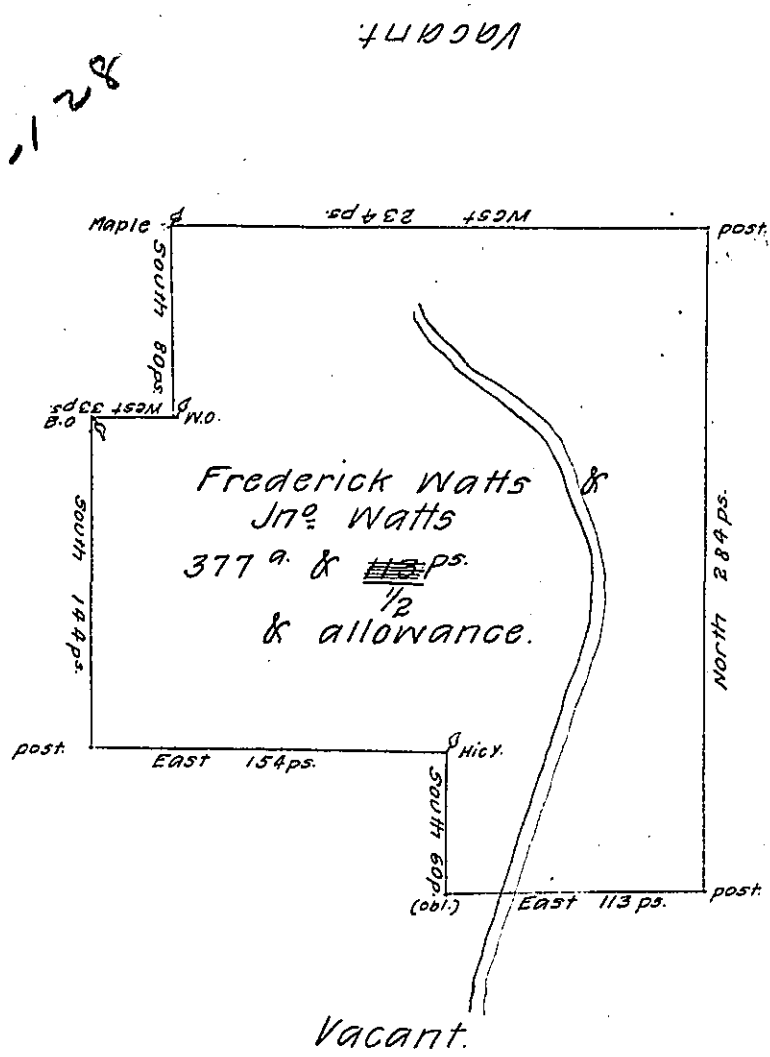


D-40-4

C17-128

Vacant  
C59-234



Timothy Picerings & Co.

Surveyd to Frederick Watts on the 7<sup>th</sup> day of June 1786 the above described tract of Land of 377 acres & one Hundred & thirteen perches & allowance of six P Cent Situate about Two Miles South of Toby's Creek & adjoining Timothy Picerings Land in Northumberland County By Warrant for 366<sup>a</sup>. No. 627 Dated the 21<sup>st</sup> Day of Sept<sup>r</sup> ~~1786~~ 1785.

Thomas B. M-Lean. D.S.

To John Lukens Esqr. S.G.

IN TESTIMONY that the above is a copy of the original remaining on file in the Department of Internal Affairs of Pennsylvania, made conformably to an Act of Assembly approved the 16th day of February 1833, I have hereunto set my hand and caused the Seal of said Department to be affixed at Harrisburg, this twenty-second day of June 1907.

*Henry Howell*  
Secretary of Internal Affairs.